

FISH 4100 / 4150

Installation and Operation Manual

English	3
Français	24
Español	46
Português	68



NAVMAN

FCC Statement

Note: This equipment has been tested and found to comply with the limits for a Class B digital device, pursuant to Part 15 of the FCC Rules. These limits are designed to provide reasonable protection against harmful interference in a normal installation. This equipment generates, uses and can radiate radio frequency energy and, if not installed and used in accordance with the instructions, may cause harmful interference to radio communications. However, there is no guarantee that interference will not occur in a particular installation. If this equipment does cause harmful interference to radio or television reception, which can be determined by turning the equipment off and on, the user is encouraged to try to correct the interference by one or more of the following measures:

- Reorient or relocate the receiving antenna.
- Increase the separation between the equipment and receiver.
- Connect the equipment into an output on a circuit different from that to which the receiver is connected.
- Consult the dealer or an experienced technician for help.
- A shielded cable must be used when connecting a peripheral to the serial ports.

Contents

1 Introduction	4
2 Getting started	5
2-1 Simulation mode	6
3 Operation	6
3-1 ALARMS	7
3-2 HISTORY screen operation	7
3-3 HISTORY screen interpretation	8
3-4 ZOOM screen	11
3-5 SONAR screen	11
3-6 NAVIGATE screen	12
3-7 DATA screen (FISH 4150 only)	13
3-8 RANGE menu	13
4 SETUP menu	14
4-1 ALARMS menu	14
4-2 UNITS menu	15
4-3 KEY BEEP	15
4-4 FISH SYMBOL	15
4-5 CONTRAST menu	15
4-6 LOG menu (FISH 4150 only)	16
4-7 INSTALL menu	16
4-8 CALIBRATION menu (FISH 4150 only)	17
4-9 Resetting to factory defaults	17
5 Installation	18
5-1 What comes with this NAVMAN fishfinder?	18
5-2 Options and accessories	18
5-3 Mounting the NAVMAN fishfinder display unit	18
5-4 Wiring connection	19
5-5 Connecting a FISH 4150 to other instruments	20
Appendix A - Specifications	21
Appendix B - Troubleshooting	22
Appendix C - How to contact us	91

NAVMAN fishfinders are set up with default units of feet, °F (Fahrenheit) and knots.
Please refer to section 4-2 of this manual to change the units.

IMPORTANT

It is the owner's sole responsibility to install and use the instrument and transducers in a manner that will not cause accidents, personal injury or property damage. The user of this product is solely responsible for observing safe boating practices.

NAVMAN NZ LIMITED DISCLAIMS ALL LIABILITY FOR ANY USE OF THIS PRODUCT IN A WAY THAT MAY CAUSE ACCIDENTS, DAMAGE OR THAT MAY VIOLATE THE LAW.

Governing Language: This statement, any instruction manuals, user guides and other information relating to the product (Documentation) may be translated to, or has been translated from, another language (Translation). In the event of any conflict between any Translation of the Documentation, the English language version of the Documentation will be the official version of the Documentation.

This manual represents the FISH 4100 and the FISH 4150 as at the time of printing. Navman NZ Limited reserves the right to make changes to specifications without notice.

Copyright © 2001 Navman NZ Limited, New Zealand, All rights reserved. NAVMAN is a registered trademark of NAVMAN NZ Limited.

1 Introduction

Congratulations on choosing a NAVMAN fishfinder. For maximum benefit, please read this manual carefully before installation and use.

This manual describes the installation and operation procedures for the FISH 4100 and FISH 4150. The manual generally refers to both products as the NAVMAN fishfinder. The product name is used only when describing features specific to that particular fishfinder.

The NAVMAN Fishfinder

The FISH 4100 is an ultrasonic fishfinder. It provides powerful software and a large, high-resolution screen with a zoom facility and a choice of fish symbols. As well as detecting fish, the FISH 4100 measures the water depth, battery voltage and engine hours.

The FISH 4150 also measures the water temperature, the boat speed and has two distance logs (Trip Log and Total Log).

An installed NAVMAN fishfinder has two parts:

- The transducer attached to the hull.
- The display unit.

The transducer generates an ultrasonic pulse (sound that is above the hearing range of the human ear), which travels down towards the bottom, spreading out into a cone shape. When the pulse meets an object, such as a fish or the bottom, some of the pulse is reflected back up towards the boat and is received by the transducer. The depth of an object can be calculated by measuring the time between sending the pulse and receiving its echo. The NAVMAN fishfinder will detect the bottom down to 600 feet (180 metres), depending on the clarity of the water, and the type of transducer used.

The strength of an echo can vary for a number of reasons. Larger fish usually return stronger echoes, as do fish in the middle of the cone, where the pulse is strongest. Reasons for weak echoes include the fish or object being in deep water or turbid water or in the edge of the cone where the pulse is weakest. Turbid water scatters the ultrasonic pulse and is difficult to 'see' through. Turbidity can be caused by air in the water (e.g. from another boat's wake) or by mud in the water.

Important

It is vital to the performance of the fishfinder that the transducer is installed in the best location. Please follow the instructions in the Transducer Installation manual very carefully.

All of the NAVMAN 4000 Series fishfinders use new proprietary SBN Technology for sonar processing to improve signal enhancement, bottom recognition and noise rejection. SBN Technology uses the latest in digital adaptive filter algorithms to enhance all returned signals.

At the same time, SBN Technology uses active noise control to reject interference, which can often be mistaken by fishfinders for true returns. Using SBN Technology, the NAVMAN fishfinder analyses the reflections from each pulse, filters false returns and displays what is in the water under the boat.

The distinctions between the four levels of shading help the user to better interpret what is in the water and what type of bottom is under the boat.

Assisting with navigation

The NAVMAN fishfinder can be used to find fish, to locate features on the bottom such as reefs or wrecks and to help recognize favourite fishing spots from the profile of the bottom. Use the NAVMAN fishfinder to assist navigation by following the depth contours marked on charts.

IMPORTANT NOTE ON USE. While the NAVMAN fishfinder can be used as an aid to navigation, accuracy can be influenced by many factors including the location of the transducer. It is the user's responsibility to ensure that the NAVMAN fishfinder is installed and used correctly.

How to find fish

Underwater features like reefs, wrecks and rocky outcrops attract fish. Use the NAVMAN fishfinder to find these features, then look for fish by passing over the feature slowly several times using the ZOOM screen (see section 3-4). Where there is a current, the fish will often be found downstream of the feature.

For deep-sea fishing with the FISH 4150, a rapid change in temperature may indicate the edge of a warm or cold current. The temperature difference can form a barrier which the fish may not swim through. Search for fish on either side of the barrier.

Cleaning and maintenance

The NAVMAN fishfinder should be cleaned with a damp cloth or mild detergent. Avoid abrasive cleaners and petrol or other solvents. Always cover or remove a transom-mounted transducer when repainting the hull. If painting over a through hull transducer with antifouling paint then use only one coat of paint. When repainting the transducer, remove previous coats of antifouling paint by sanding it lightly.

When not in use, the NAVMAN fishfinder can either be removed from the installation bracket and stored in a safe, dry, cool place such as the NAVMAN carry bag, or left on the installation bracket and securely covered. An optional sun cover, that also prevents key depressions when in place, is available from NAVMAN dealers.

2 Getting started

Power and transducer connection

FISH 4100

One end of the integrated transducer / power cable has an 8 pin LT connector plug. Push this plug into the socket located on the rear of the display unit, then turn the collar to lock. Make sure that the collar is secure for a watertight connection.

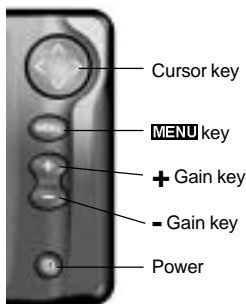
FISH 4150

One end of the power cable has a black 8 pin LT connector plug. Push this plug into the lower socket, which has a black nut and is located on the rear of the display unit, then turn the collar to lock. Make sure that the collar is secure for a watertight connection.

One end of the transducer cable has a blue 8 pin LT connector plug. Push this plug into the upper socket, which has a blue nut and is located on the rear of the display unit, then turn the collar to lock. Make sure that the collar is secure for a watertight connection.

If the transducer is not connected, the message "NO TRANSDUCER DETECTED. ENTER SIMULATION MODE?" will appear. Press > to switch between YES or NO. (More information on the simulation mode can be found in the following section). Press **MENU** to confirm the selection and the startup sequence will continue. (Note: If the transducer was not intentionally disconnected, turn the display unit off and refer to the section on Troubleshooting in Appendix B, 9.)

Names of keys:



Definition of **Press** and **Hold** in this manual:

- **Press** means to push the key for less than one second.
- **Hold** means to push and hold the key down for more than one second.

Power on

To turn the fishfinder on press **⏻**.

Note: if the ignition wire is connected (see section 5-4) then the fishfinder will turn on automatically when the boat's ignition is turned on.

A title screen briefly appears which displays basic product information, including the software version. The NAVMAN fishfinder then automatically displays the screen that was last used.

Power off

To turn the fishfinder off, hold **⏻**. A countdown box appears. Continue to hold **⏻** for 3 seconds until the fishfinder turns off.

Note: if the unit is wired for Auto Power (see section 5-4) the fishfinder can only be turned off when the boat's ignition is turned off.

Language selection

To check which language is currently selected, press **MENU** to display the MAIN MENU.

Follow these steps to change the language:

1. Power off the unit.
2. While the unit is off, hold down the **∨** key.
3. Keep holding down the **∨** key and power on the unit.
4. The screen displays a list of languages. Press the Cursor **∧** or **∨** key to highlight a language, then press the Cursor **>** key to select it. The fishfinder will continue the startup sequence.

For further information, (see section 4-7).

Backlighting

Use the **⏻** button to adjust the backlighting to suit individual preferences.

Press **⏻** once, at any time, to see the backlight bar. This is displayed at the bottom of the screen and shows the current setting.

Press **⏻** repeatedly until the desired backlighting level is achieved. The backlight bar will disappear 2 seconds after the last press.

2-1 Simulation Mode

An internal simulator allows users to learn how to operate the fishfinder off the water.

In Simulation mode the word "SIMULATION" flashes on the bottom of the screen. The fishfinder generates data so that all the main screens appear to be operational. Any changes made to the contrast, backlighting, alarms or the display setup are saved.

Turning Simulation on and off

FISH 4100

Note: The FISH 4100 requires the use of the optional Through Hull adapter cable wired to a

power supply of 12 V DC to access the Simulation mode. Contact your nearest NAVMAN dealer.

FISH 4150

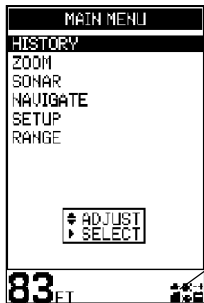
To turn the Simulation mode on, power the fishfinder off, disconnect the blue transducer plug at the rear of unit, then turn the power on.

To turn the Simulation mode off, power the fishfinder off, reconnect the blue transducer plug at the rear of the unit, then power the fishfinder on.

3 Operation

MAIN MENU screen

The NAVMAN fishfinder is menu driven. Press **MENU** to display the MAIN MENU screen. The FISH 4100 MAIN MENU is shown:



Enabled alarms
(displayed on all
screens).

The FISH 4150 has an extra option: DATA.

Press \wedge or \vee to highlight an option, then press $\>$ to select it.

The MAIN MENU options are summarized below and fully explained in the following sections.

HISTORY screen (see section 3-2)

Displays the echoes received over time, with the most recent events on the right of the screen. Use this screen when travelling to show the bottom so reefs, wrecks and fish can be found.

ZOOM screen (see section 3-4)

This screen is split into two parts. On the right is the Full Range Section which shows part of the HISTORY Screen and to the left is the Zoom Section.

Use this screen for taking a closer look at interesting underwater features.

SONAR screen (see section 3-5)

Displays the strength and depth of the echoes returned from each ultrasonic pulse. The depth range is displayed in the lower right corner. This screen is a powerful aid, ideal for showing the bottom hardness and the fish species.

This screen can also be used to adjust the display shading on the HISTORY and ZOOM screens.

NAVIGATE screen (see section 3-6)

Prominently displays the water depth as a digital readout. The corresponding bottom trace is also shown. These two complimentary features are particularly useful for understanding depth trends when travelling at speed.

The FISH 4100 and 4150 display the engine-hours counter, boat battery voltage and enabled alarms.

The FISH 4150 also displays the boat speed.

DATA screen (see section 3-7)

(FISH 4150 only)

The DATA screen displays the water temperature and water temperature history over the last 40 minutes. It also displays the boat battery voltage, log, engine-hours counter, boat speed and water depth.

SETUP menu (see section 4)

Use this option to customize the NAVMAN fishfinder to suit the boat and individual preferences.

RANGE menu (see section 3-8)

Use this option to select either Auto or Manual Range and to change the selected depth range.

3-1 ALARMS

Alarms can be enabled to automatically detect certain conditions, such as the water being too shallow. The trigger settings for the alarms can be defined to suit the boat and individual preferences.

The FISH 4100 has four alarms, TOO SHALLOW, TOO DEEP, FISH ALARM and LOW BATTERY.

The FISH 4150 has two extra alarms, TEMP VALUE and TEMP RATE.

The alarm symbols and beeper cycles for all of the alarms are shown in section 4-1. The FISH ALARM is three short beeps, the TOO SHALLOW ALARM is a rapid continuous beep while all others are a slower continuous beep.

When an alarm condition is met, then:

- the beeper sounds.
- the ALARMS menu is displayed on the screen with the activated alarm(s) flashing.

Press any key to acknowledge the alarm, stop the

beeping and remove the ALARMS menu. This does not disable the alarm. The symbol will continue to flash until the alarm condition is no longer present.

Alarms automatically re-enable

The TOO SHALLOW, TOO DEEP and LOW BATTERY alarms automatically re-enable when the value moves outside the alarm trigger setting.

The TEMP VALUE alarm automatically re-enables when the temperature is more than 0.45°F (0.25°C) above or below the alarm trigger setting.

The TEMP RATE alarm automatically re-enables when the rate of temperature change falls below the trigger setting by more than 0.2°F (0.1°C) per minute.

Enabling Alarms and Changing Trigger Values

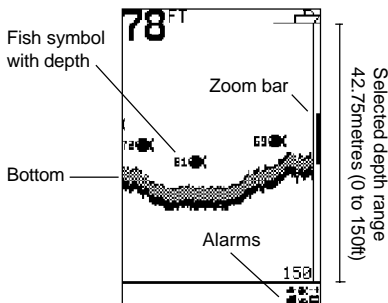
See section 4-1 for information about enabling alarms and changing the trigger values.

3-2 HISTORY screen operation

Select MAIN MENU - HISTORY to display the HISTORY screen.

The HISTORY screen displays the most recent echoes on the right of the screen and the oldest echoes on the left. These eventually disappear off the screen.

The vertical bar on the right edge of the screen is the zoom bar. This shows the zoom range. To adjust the zoom range see section 3-4.



The HISTORY screen does not show a fixed distance travelled by the boat; rather, it displays what has passed below the boat during a certain period of time. The actual display depends upon the boat speed and the depth of the water.

As the boat travels through shallow water, the echoes have less distance to travel between the objects and

the boat. This means that the HISTORY screen display moves across the screen more quickly than when the boat is travelling in deep water. In deep water, the echoes take longer to travel between the objects and the boat, producing a display that moves across the screen more slowly.

Note 1: Different fish symbols can be selected (see section 4-4).

Note 2: The depth of bottom can be adjusted for keel offset (see section 4-7).

Range

Range is the depth of water displayed vertically. The NAVMAN fishfinder has two range modes, Auto Range and Manual Range:

- In Auto Range, the fishfinder adjusts the depth range automatically so that the bottom is always shown in the lower part of the screen. The use of Auto Range is recommended.
- In Manual Range, the fishfinder shows only a selected depth range. In areas of rapidly changing bottom depth, such as the sea floor around pinnacles, it can be useful to prevent the screen from rescaling to always show the bottom. If the bottom is deeper than the specified depth range, it will not be shown on the display screen.

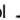
To change the range mode, (see section 3-8).

Changing the Gain Mode

Gain (sensitivity) controls the amount of detail displayed on the screen. The NAVMAN fishfinder has two gain modes, Auto Gain and Manual Gain:

- In Auto Gain, the gain is automatically adjusted to compensate for water depth and clarity. The use of Auto Gain is strongly recommended when learning to use a fishfinder, or when travelling at speed.
- In Manual Gain, the user can adjust the gain to compensate for water depth and clarity. Manual settings range from 1 to 9. High settings may amplify normal background noise until it appears as random pixels on the screen. The ideal setting produces only a small number of random pixels. Normally the best results with a fishfinder are obtained in Manual Gain but practice and experience are required to understand how to adjust the gain correctly.

To change between Auto Gain and Manual Gain, hold **+** or **-**. The Gain mode will be displayed briefly at the bottom of the screen.

When in Manual Gain the gain symbol  is shown at the top of the display, followed by the gain level. Press **+** to increase the gain level or press **-** to decrease the gain level.

3-3 HISTORY screen interpretation

Fish Arches

In ideal conditions and with Fish Symbols turned OFF, a fish passing through the cone-shaped ultrasonic pulse is displayed on the screen as a fish arch:



As the fish enters the weak edge of the sonar cone it generates a weak return signal that turns on the first pixel on the fishfinder screen. As the boat moves closer to the fish the distance between the transducer and the fish reduces and the return signal is displayed at progressively shallower depths, producing the start of an arch. When the fish is directly beneath the transducer and in the middle of the beam then the

Fish detection and display

The fish symbol option can be customized, or switched off altogether so that the echoes are not converted to fish symbols on the screen. Section 4-4 explains how to do this. The differences between Fish symbol on and off are:

Fish Symbol ON

Using NAVMAN's SBN sonar technology the fishfinder analyses all return signals and eliminates most false signals and clutter so that remaining targets are most likely fish. Depending on the strength of the remaining signals, they are displayed as either small, medium or large fish symbols - with or without depth. Whilst the SBN processing is very sophisticated it is not foolproof and there will be times when the unit will not be able to differentiate between large air bubbles, rubbish containing air, fishing floats etc. and genuine fish returns.

Fish Symbol OFF

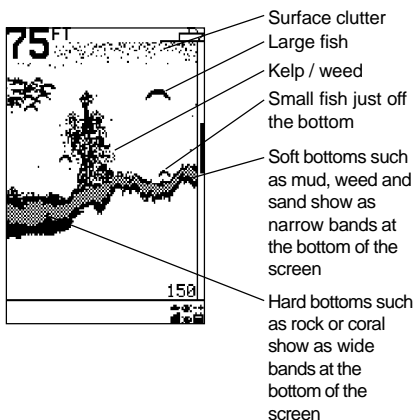
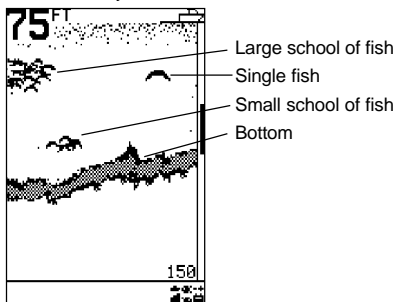
For experienced users this will always provide the best information as every sonar return signal is displayed, whether it is surface clutter, a thermocline or a fish.

returned signal is even stronger so the arch becomes thicker. As the fish passes out of the cone the reverse happens with a progressively weaker and deeper return.

In reality there are many reasons why fish arches can't be seen. For example:

- Poor transducer installation - please refer to the *Transducer Installation Guide*.
- If the boat is anchored then fish will tend to show on the display as horizontal lines as they swim into and out of the transducer sonar beam. Slow speeds in deeper water give best fish arch returns.
- Range is important. It will be much easier to see fish arches when using NAVMAN's split screen zoom mode to concentrate on a particular section of water rather than just displaying everything from the surface to the bottom. Zooming increases screen resolution and is necessary for good fish arches.
- It is almost impossible to get fish arches in shallow water as the transducer sonar beam is very narrow near the surface and fish do not stay within the beam long enough to display an arch. Several fish in shallow water tend to display as randomly stacked blocks of pixels.

The following picture shows the HISTORY screen with the fish symbols turned off:



Strength of returned echoes

The shading indicates differences in the strength of the returned echo from the bottom. A grey chequered pattern indicates a strong echo and solid black indicates a weak echo. Fish symbols are always shown in black.

The strength of the returned echo varies with several factors, such as:

- The size of the fish, school of fish or other object.
- The depth of the fish or object.
- The location of the fish or object. The area covered by the ultrasonic beam is approximately cone-shaped and echoes are strongest in the middle.
- The clarity of water. Particles or air in the water reduce the strength of the returned echo.
- The composition or density of the object or bottom. Mud, weed and sand bottoms tend to weaken and scatter the sonar signal, which results in weaker returns. Rock or coral bottoms concentrate the return signal for strong returns.

Note that planing hulls at speed produce air bubbles and turbulent water that bombard the transducer. The resulting ultrasonic noise may be picked up by the transducer and obscure the real echoes.

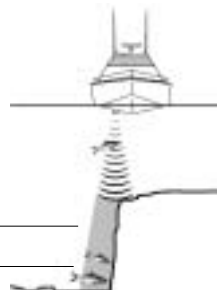
Shadows

Shadows are areas where the ultrasonic beam cannot 'see'. These include hollows on the bottom or beside rocks and ledges where the strong echo returned off the rock obscures the weaker echo of the fish.

When looking for small objects including fish, users should consider that there are places where fishfinders cannot 'see'.

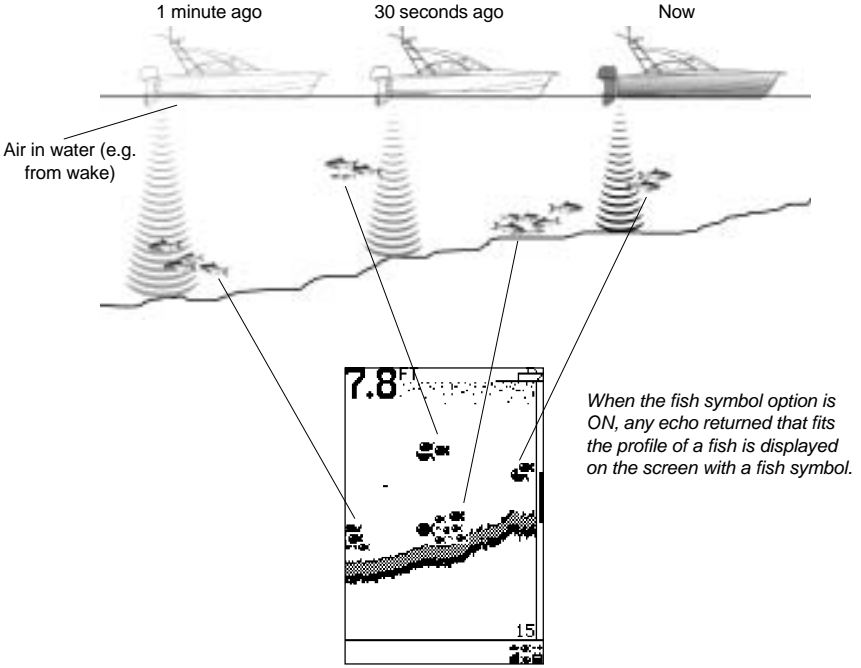
Shadow - where objects are hidden in the bottom echo. _____

These fish will be hidden in the bottom echo. _____

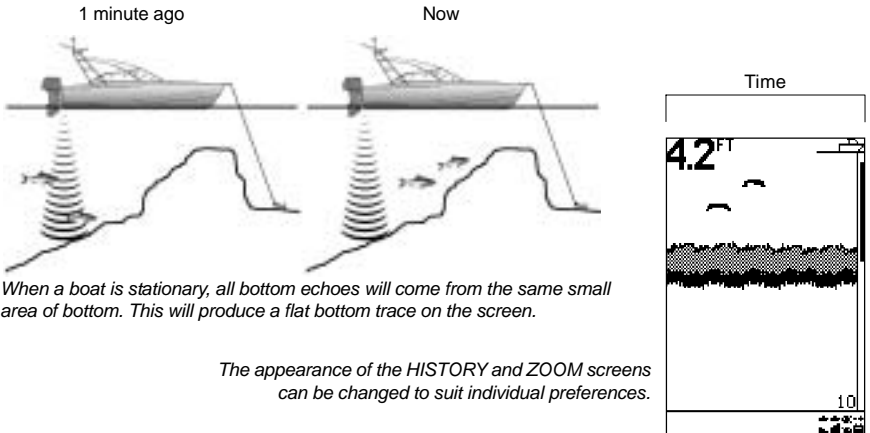


NAVMAN fishfinders display the most recent events on the right of the screen.

Moving boat



Stationary boat



When a boat is stationary, all bottom echoes will come from the same small area of bottom. This will produce a flat bottom trace on the screen.

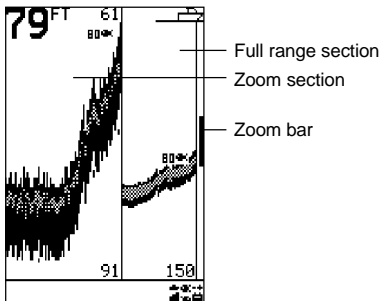
The appearance of the HISTORY and ZOOM screens can be changed to suit individual preferences.

Note: times indicated are for illustration only.

3-4 ZOOM screen

Select MAIN MENU - ZOOM to display the ZOOM screen.

The ZOOM screen is split into two parts. On the right is the full range section (just like the HISTORY screen) and on the left is the zoom section.



The full range section illustrated is 42.75 m (150 ft) and the zoom bar, located on the right edge of the screen, shows the area that is enlarged in the zoom section, in this case the section between 18.6 m and 27.7 m (61 ft and 91 ft).

3-5 SONAR screen

Select MAIN MENU - SONAR to display the SONAR screen.

This is a powerful feature and with some experience, this screen can be used to identify both the type of bottom and the fish species.

On the Sonar Echo section on the right side, the strength of an echo at a particular depth is shown by a horizontal line at that depth. A strong echo produces a long line, whereas a weak echo produces a short line. Below the echoes the screen shows the Shading Bar.

The left side of the screen is the Fish History section. Using the Shading Bar as a control, the fishfinder interprets the echoes shown on the Sonar Echo section and uses this information to draw the Fish History section.

Recognizing the Type of Bottom

The bottom trace is the strongest echo shown in the lower part of the left side of the screen.

A bottom trace with a wide chequered grey layer is indicative of a hard bottom, because a hard bottom returns strong echoes. Conversely, a soft bottom produces medium or weak echoes, which are shown by a narrower trace.

The zoom section shows the area of interest (such as fish or features close to the bottom) in greater detail than the HISTORY screen.

Bottom Lock

The zoom bar is normally locked to the bottom (Bottom Lock) so that the bottom is always displayed in the zoom section, regardless of changes in depth.

To turn Bottom Lock off, press \wedge then move the zoom bar to the desired position with \wedge or \vee .

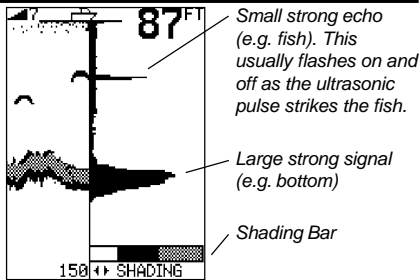
To turn Bottom Lock on, move the zoom bar down until it touches the bottom and the message "BOTTOM LOCK ON" briefly appears.

If Bottom Lock is off and the bottom rises to meet the zoom bar, the zoom bar will temporarily track the bottom. This condition will cease when the depth exceeds the original depth of the zoom bar.

Changing the Zoom

To increase magnification (make the zoom bar smaller), press \leftarrow . To decrease magnification (make the zoom bar bigger), press \rightarrow .

Alternatively, the zoom bar can be adjusted in the HISTORY screen before switching to the ZOOM screen.



Recognizing the Type of Fish

Different species of fish have different sizes and shapes of swim bladders. The air in the swim bladder reflects the ultrasonic pulse, so the strength of the echo varies between fish species according to the size and shape of the swim bladder. The sonar display on the FISH 4100 / 4150 is 70 pixels wide, so it can show 70 levels of return echo strength, which is a powerful feature.

When fishing among a school of fish and catching them, note the fish species and the strength of the echo that it returns on the fishfinder on the Sonar Echo screen. Then, the next time that particular return on the fishfinder is seen, it is likely to be the same fish species.

Adjusting the Shading Bar

The Shading Bar is displayed as a horizontal bar in the lower half of the screen. Use the Shading Bar to choose the strength of the echoes to be displayed in black on the screens. Echoes that are weaker are displayed in black.

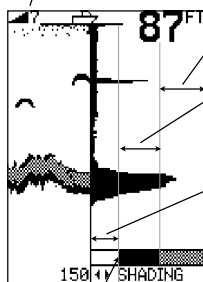
Increase the black part of the Shading Bar by pressing > if there are too few long (strong) echoes being displayed.

Decrease the black part of the Shading Bar by pressing < if there are too many long (strong) echoes being displayed.

Manual Gain

When Manual Gain is selected, increasing the gain setting will result in more detail being shown on the fishfinder display. Decreasing the gain will reduce detail being shown. See 'Changing the Gain Mode' in section 3-2 for more information on changing Gain settings.

Gain setting



These strong echoes will be shown in chequered grey on the Fish History screen

These medium echoes will be shown in black on the Fish History section

The weak echoes within this white section of the shading bar will not be shown - they are below the threshold of where the shading begins.

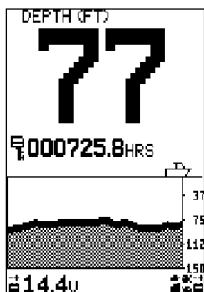
Increasing Gain by pressing + will move the black bar to the left and result in weaker echoes being displayed in the Fish History section.

3-6 NAVIGATE screen

Select MAIN MENU - NAVIGATE to display the NAVIGATE screen. The screen display is different for the FISH 4100 and the FISH 4150.

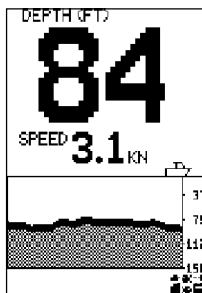
The NAVIGATE screen displays useful information while travelling at speed.

The FISH 4100 prominently displays the depth and bottom. It also displays the engine-hours counter, the battery voltage and any alarms that are enabled:



Depth can be displayed in feet (FT), fathoms (FA), or metres (M). Use the SETUP - UNITS - DEPTH menu to select the required depth units (see section 4-2).

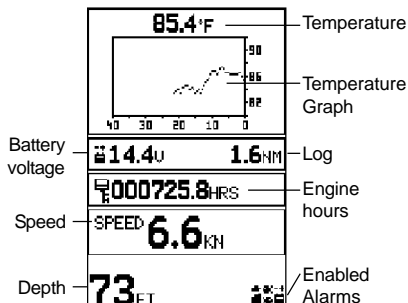
The FISH 4150 prominently displays the water depth, also the boat speed, the bottom and any alarms that are enabled.



Speed is displayed only on the FISH 4150. Speed can be displayed in knots (KN), miles per hour (MPH), or kilometres per hour (KPH). Use the SETUP - UNITS - SPEED menu to select the desired speed units (see section 4-2).

3-7 DATA screen (FISH 4150 only)

Select MAIN MENU - DATA to display the DATA screen:



A graph displays the surface water temperature for the last 40 minutes and is updated every 30 seconds. The current water temperature is displayed above the graph and is updated every second.

The temperature can be displayed in °F (Fahrenheit) or °C (Celsius). Use the SETUP - UNITS - TEMPERATURE menu to select the desired temperature units (see section 4-2).

Alarms that indicate a specific temperature, or rate of change of temperature, may be enabled (see section 4-1).

Log. One of two distance logs can be displayed: Trip Log or Total Log. Both logs are retained in the fishfinder memory when the FISH 4150 is switched off.

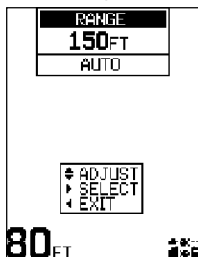
Use the SETUP - LOG menu to select the Trip Log or Total Log (see section 4-6). The Trip Log must be reset manually (e.g. to record total mileage during a season, or the distance travelled on this trip). Note that the units displayed on each Log will correspond with the Speed.

Speed can be displayed in knots (KN), miles per hour (MPH), or kilometres per hour (KPH). Use the SETUP - UNITS - SPEED menu to select the desired speed units (see section 4-2).

3-8 RANGE menu

Select MAIN MENU - RANGE to change the manual range and adjust the selected depth range.

The range setup box is displayed. This shows the depth of water displayed vertically and the range mode setting.



The NAVMAN fishfinder has two range modes, Auto Range and Manual Range. The use of Auto Range is recommended. See section 3-2 for more details.

To change between Auto Range and Manual Range, press >.

The Manual Range mode offers the user a choice of pre-selected water depths. Use ^ and v to display the options and select a water depth.

Press < to exit.

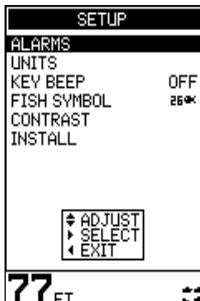
4 SETUP menu

Use the SETUP menu to customize the NAVMAN fishfinder to suit the boat and individual preferences.

On a FISH 4100 use the SETUP menu to:

- Specify the trigger settings for the alarms (4-1).
- Choose the depth units (4-2).
- Turn the key beep on or off (4-3).
- Choose the fish symbol (4-4).
- Adjust the display contrast (4-5).
- Select language and setup keel offset (4-7).

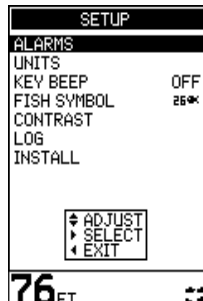
Select MAIN MENU - SETUP to display the FISH 4100 SETUP Menu. Press \wedge or \vee to select an option:



On a FISH 4150 use the SETUP menu to:

- Specify the trigger settings for the alarms (4-1).
- Choose the units for depth, temperature and speed (4-2).
- Turn the key beep on or off (4-3).
- Choose the fish symbol (4-4).
- Calibrate the log, temperature and speed (4-6, 4-8).
- Select the Trip Log or the Total Log (4-6).
- Zero the Trip Log or zero all logs (4-6).
- Adjust the display contrast(4-5).
- Select language, setup keel offset and calibrate speed and temperature sensors (4-7, 4-8).

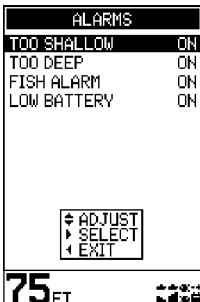
Select MAIN MENU - SETUP to display the FISH 4150 SETUP Menu. Press \wedge or \vee to select an option:



4-1 ALARMS menu

Select MAIN MENU - SETUP - ALARMS to display the available alarms. Press \wedge or \vee to select an option.

Alarms can be enabled to automatically detect certain conditions, such as the water being too shallow. Trigger settings can be defined to suit the boat and individual preferences. The FISH 4100 ALARMS menu is shown:



The FISH 4150 has two extra alarms, TEMP VALUE and TEMP RATE.

The beeper cycle is different for some alarms. All of the alarm symbols and beeper cycles on the FISH 4100 are shown:

Symbol	Alarm Name	Beeper Cycle	Alarm condition is met when:
	Too Shallow	1/5 sec	the depth is less than the alarm trigger value
	Too Deep	1/2 sec	the depth is greater than the alarm trigger value
	Fish Alarm	3 short beeps	an echo matches the profile of a fish
	Low Battery	1/2 sec	the battery voltage is less than the alarm trigger value

The alarm symbols and beeper cycles for the two extra alarms on the FISH 4150 are shown:

Symbol	Alarm Name	Beeper Cycle	Alarm condition is met when:
	Temp Value	1/2 sec	the temperature equals the alarm trigger value
	Temp Rate	1/2 sec	the rate of change of temperature equals the alarm trigger value

When an alarm condition is met, then:

- The beeper sounds.
- The ALARMS menu is displayed on the screen with the activated alarm symbol(s) flashing. Press any key to acknowledge the alarm, stop the beeping and remove the ALARMS menu. This does not disable the alarm. The symbol will continue to flash until the alarm condition is no longer present. Note: The FISH ALARM gives only three short beeps.

Alarms automatically re-enable

The TOO SHALLOW, TOO DEEP and LOW BATTERY alarms automatically re-enable when the value moves outside the alarm trigger setting.

The TEMP VALUE alarm automatically re-enables when the temperature is more than 0.45°F (0.25°C) above or below the alarm trigger setting.

The TEMP RATE alarm automatically re-enables when the rate of temperature change falls below the trigger setting by more than 0.2°F (0.1°C) per minute.

Flashing Light and/or External Beeper (FISH 4150 only)

If a secondary alarm indicator is required, a flashing light and/or external beeper can be installed with a FISH 4150. These can be positioned anywhere suitable on the boat. For installation advice see section 5-4.

Enabling Alarms and Changing Trigger Values

Press \wedge or \vee to highlight an alarm, then press $>$ to select it. To enable or disable an alarm, press $>$ to switch between ON and OFF.

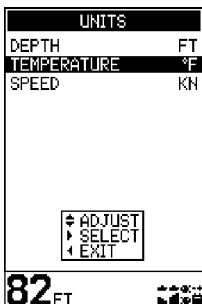
To set the trigger value for an Alarm, press \wedge or \vee to increase or decrease the trigger value.

The alarm trigger value is retained even when the alarm is disabled.

4-2 UNITS menu

Select MAIN MENU - SETUP - UNITS to define the depth units on a FISH 4100.

The temperature units and speed units can also be defined on a FISH 4150. The FISH 4150 UNITS menu is shown:



Press \wedge or \vee to highlight an option.

DEPTH

can be displayed in units of feet (FT), fathoms (FA), or metres (M). Press $>$ to select the required depth units.

TEMPERATURE

can be displayed in °F (Fahrenheit) or °C (Celsius). Press $>$ to select the required temperature units.

SPEED

can be displayed in knots (KN), miles per hour (MPH), or kilometres per hour (KPH). Press $>$ to select the required speed units.

Note: Distance units will change automatically to match the speed units.

4-3 KEY BEEP

Select MAIN MENU - SETUP - KEY BEEP to enable or disable a single beep that audibly confirms a keypress.

Press $>$ to select ON or OFF. The default setting is ON.

4-4 FISH SYMBOL

Select MAIN MENU - SETUP - FISH SYMBOL to display the fish symbol options for the screen displays.

There are three options. Press $>$ to select:

- OFF
- 
- 

OFF

Displays echoes directly as pixels on the screen.



Displays any echoes that match the profile of a fish as a fish symbol. Echoes that are not recognized as fish are displayed as pixels on the screen.



Displays any echoes that match the profile of a fish as a fish symbol with the depth. Echoes that are not recognised as fish are displayed as pixels on the screen.

4-5 CONTRAST menu

Select MAIN MENU - SETUP - CONTRAST to display the contrast setting box and the current setting.

The contrast level can be set at any level between 0 and 16. The default setting is 6.

Press \wedge or \vee to increase or decrease the setting to the required level. Then press $<$ to exit.

4-6 LOG menu (FISH 4150 only)

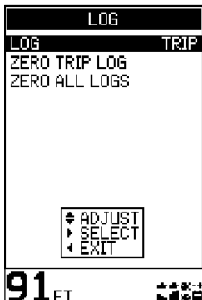
Select MAIN MENU - SETUP - LOG to display the available options.

Press \wedge or \vee to select an option:

LOG

Selects which log is displayed on the DATA screen, TOTAL or TRIP.

Press \gt to choose between TRIP or TOTAL. Both logs are retained in the NAVMAN fishfinder but only the selected log is displayed.



ZERO TRIP LOG

Resetting the trip log will return the trip log value to zero. The trip log is retained in the fishfinder memory

so it retains the distance value if the fishfinder is switched off during a trip. Therefore, the trip log needs to be reset manually each time the user wishes to log a trip.

Press \wedge or \vee to highlight ZERO TRIP LOG, then press \gt to select it. The message box "ZERO TRIP LOG YES" appears.

Press \gt to select YES or NO. Then press **MENU** or \lt to reset the trip log and exit.

ZERO ALL LOGS

Resetting both logs will return both the trip log and the total log values to zero.

Press \wedge or \vee to highlight ZERO ALL LOGS, then press \gt to select it. The message box "ZERO ALL LOGS YES" appears.

Press \gt to select YES or NO. Then press **MENU** or \lt to exit.

4-7 INSTALL menu

Use this menu at installation time, to select the language and to enter the keel offset value for the boat.

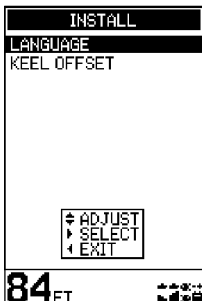
Select MAIN MENU - SETUP - INSTALL to display the menu. The FISH 4100 install menu is shown. An extra option, CALIBRATION, is available on the FISH 4150 to calibrate water temperature and boat speed. The FISH 4100 Install Menu is shown:

Press \wedge or \vee to select an option:

LANGUAGE

The following languages are available: English, French, Swedish, Italian, Spanish, Portuguese, Dutch, German and Finnish.

Press \wedge or \vee to highlight the selected language, then press **MENU** to save and exit.



KEEL OFFSET

Keel offset is the distance between the location of the depth transducer and the point the displayed depth is measured from.

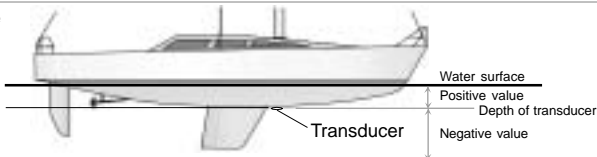
Enter a keel offset value when the transducer is located below the water surface but a display of total water depth is required, or when the depth of water below the boat's keel is required.

Press \wedge or \vee to select KEEL OFFSET, then press \gt to display the keel offset box.

Negative values display the depth as measured from a point below the transducer (e.g. keel). Positive values display the depth as measured from a point above the transducer (e.g. water surface).

Press \wedge or \vee to increase or decrease the value.

Use *Keel Offset* either when the transducer is located below the water surface but a display of total water depth is required, or when depth of water below the boat's keel is required.



Note: Boat illustrated uses a through hull transducer

Enter **positive** values to display depth as measured from a point **above** the transducer (e.g. Water surface).
Enter **negative** values to display depth as measured from a point **below** the transducer (e.g. keel).

4-8 CALIBRATION menu (FISH 4150 only)

Use this menu to calibrate the water temperature and the boat speed.

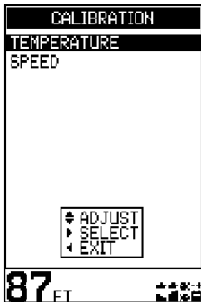
Select MAIN MENU - SETUP - INSTALL - CALIBRATION to display the calibration menu.

Calibrating the Temperature

The factory settings should be sufficiently accurate for normal usage. However to calibrate the temperature readout, first measure the water temperature.

Then, to calibrate the setting, select TEMPERATURE then press > to display the temperature readout box. Press \wedge or \vee to increase or decrease the value to match the measured temperature.

(To change the temperature units between $^{\circ}\text{F}$ (Fahrenheit) or $^{\circ}\text{C}$ (Celsius), use the SETUP - UNITS menu (see section 4-2).



Calibrating the Speed

Use this to calibrate the boat's speed and log. Calibration may be required because different hull shapes have different flow characteristics.

Obtain an accurate measurement of the boat's speed from a GPS receiver; by following another boat travelling at a known speed; or by making a timed run over a known distance.

Note that for accurate calibration:

- The speed from a GPS receiver should be greater than 5 knots.
- The speed from another paddlewheel transducer should be between 5 and 20 knots.
- Best results are achieved in calm conditions where there is minimal current (best at high or low tide).

Use \wedge or \vee to highlight the SPEED option, then press > to display the speed readout box. Press \wedge or \vee to increase or decrease the readout to match the independent speed value.

4-9 Resetting to Factory Defaults

Important

This option resets all of the following settings and resets them to the manufacturer's default settings.

Settings relating to water temperature and boat speed are for the FISH 4150 only. Speed and distance are related. For example, if knots are chosen as the speed units, then distance is always measured in nautical miles.

To reset the fishfinder to the manufacturer's default settings, power off the fishfinder. Then hold < and power on while holding it.

The message "RESET TO FACTORY DEFAULTS?" appears. If "YES" is highlighted, do nothing and the fishfinder resets to the default settings. Otherwise, press < or > to select YES.

GENERAL

Auto Gain	ON
Auto Range	ON
Manual Gain	5
Bottom Lock	ON
Key Beep	ON
Contrast	6
Backlighting	6

UNITS

Temperature	$^{\circ}\text{F}$
Depth	Feet
Speed	KN
Distance	NM

ALARMS

Shallow Alarm	OFF
Shallow Alarm Value	10 ft
Deep Alarm	OFF
Deep Alarm Value	60 ft
Fish Alarm	OFF
Temp. Change Alarm	OFF
Temp. Change Alarm Value	5.0 $^{\circ}\text{F}$
Temp. Alarm	OFF
Temp. Alarm Value	80 $^{\circ}\text{F}$
Low Battery Alarm	OFF
Battery Alarm Value	11.5 Volts

FISH SYMBOL



INSTALL

Keel Offset

0.0 ft

5 Installation

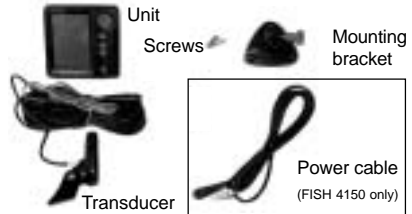
Correct installation is critical to the performance of the NAVMAN fishfinder. There are two components to install, the display unit and the transducer. It is

vital to read the entire installation section of this manual and the documentation that comes with the transducer before attempting installation.

5-1 What comes with this NAVMAN fishfinder?

Standard configuration

- FISH 4100 or FISH 4150 display unit.
- Power cable (the FISH 4100 power cable incorporates the transducer cable).
- Mounting bracket.
- Warranty registration card.
- This manual.
- Transducer.
- Transducer Installation Manual.
- Screws.



5-2 Options and Accessories

Optional transducers

- Through hull Speed/Temperature transducer.
- Through hull Depth transducer.
- In hull Depth transducer.

Other options and accessories

- Flush mounting kit.
- Replacement paddle wheel.
- Sun cover.
- Adapter cable for through hull transducer.
- Carry bag.
- Transducer extension cable (FISH 4150 only).

Depth Repeater

Repeater for Depth, Speed, Water Temperature, Battery Voltage (for FISH 4150 only).

Please consult your NAVMAN dealer for more information.

5-3 Mounting the NAVMAN Fishfinder Display Unit

Mounting the bracket

1. Select a position where the display head will be:
 - at least 100 mm (4 in) away from the compass.
 - at least 300 mm (12 in) away from any radio transmitter.
 - at least 1.2 m (4 ft) away from any antenna.
 - easy to read by the helmsman and crew while underway.
 - protected from physical damage during rough sea passages.
 - easy to access the 12 volt power source.
 - convenient to route the transducer cables.
2. Fix the mounting bracket onto the boat using the three stainless steel screws. Do not overtighten the screws, as the bracket may not rotate.

3. Push the display unit onto the mounting bracket and tighten it firmly using the knob on the mounting bracket.
4. Attach the cables.

Note: There is also an optional flush mount kit available. Please consult your NAVMAN dealer for details.

Removing the NAVMAN fishfinder

The NAVMAN fishfinder can be removed after each use for protection against the environment or security reasons.

When removing the NAVMAN fishfinder, ensure that the plugs left in the boat are not exposed to the elements. Push the attached dust covers over the exposed ends of the plugs. Keep the display unit in a dry clean place such as the optional NAVMAN carry bag.

5-4 Wiring Connection

Warning

1 Amp fuses must be positioned where shown in the wiring diagrams.

If possible, route the transducer cables away from other wiring on the boat. Electrical noise from engine wiring, bilge pumps and other electrical equipment can affect the unit.

The shortest and most direct connection to the boat's battery helps to minimize voltage drop. Do not lay cable along the bilge.

Two wiring options are described in this section:

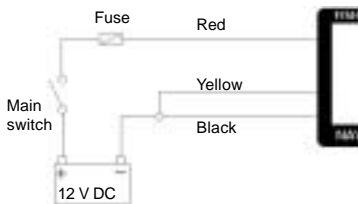
- **Basic Wiring.** This does not start the fishfinder automatically when the boat ignition is switched on and it disables the engine hours counter.
- **Auto Power Wiring.** This must be used for engine hours and fuel computer options.

Important

The NAVMAN fishfinder **must** be run off a 12 volt battery and **must not** be run off a circuit without a battery.

Basic Wiring

This option is possible on both the FISH 4100 and the FISH 4150.



Black wire: Connect this to the negative battery terminal.

Red Wire: Connect this to the 12 V positive battery terminal after the main switch. Fit a 1 Amp fuse as shown.

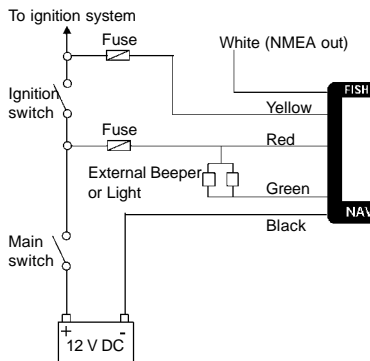
Yellow wire: Connect this to the black wire. This disables the engine hours counter.

Power on the fishfinder manually whenever the main switch is on.

Auto Power Wiring

This option is possible on both the FISH 4100 and the FISH 4150.

Note: Green and white wires are on the FISH 4150 only.



Black wire: Connect this to the negative battery terminal.

Red Wire: Connect this to the 12 V positive battery terminal after the main switch. Fit a 1 Amp fuse as shown.

Yellow Wire: To enable the engine hours counter and start the fishfinder automatically when the ignition is turned on, connect the yellow wire to the ignition system, through a 1 Amp fuse. Note that the fishfinder cannot be turned off while the ignition is on.

Flashing Light and/or External beeper (FISH 4150 only)

Use the green wire on the FISH 4150, if desired, to connect a secondary alarm indicator such as a flashing light or a 12 V external beeper with a built in drive circuit. Refer to the wiring diagram. If the external beeper or light requires more than 250 mA dc total, fit a 12 V relay. Consult your NAVMAN dealer for more advice.

NMEA Instruments (FISH 4150 only)

Use the white wire on the FISH 4150, if desired, to connect the fishfinder to other NMEA instruments such as the NAVMAN depth repeater. See section 5-5 for more information.

5-5 Connecting a FISH 4150 to other instruments

Several NAVMAN instruments can be connected together to share data such as Depth or Speed. The FISH 4150 fishfinder uses the NMEA protocol to output data to other instruments.

NMEA

NMEA is an industry standard for marine instrument communications. Data sent by one instrument over

an NMEA line can be read and displayed by another instrument that accepts NMEA 0183 Version 2. Depth, speed and temperature data is output by the FISH 4150 and can be read and displayed by the NAVMAN REPEAT 3100, DEPTH41, GPS Chartplotter, or other NMEA instrument.



REPEAT 3100

Repeater for depth, speed, water temperature and battery voltage.



DEPTH41

Depth repeater.

Please consult your NAVMAN dealer for more information.

Please contact your NAVMAN dealer for information on NAVMAN's full range of NMEA enabled instruments and connection options.

Appendix A - Specifications

Depth range

- 0.6 m (2 ft) to 180 m (600 ft)

Display type

- FSTN
- Screen resolution 160 high x 120 wide (pixels).
- Yellow multi-level back lighting.

Supply voltage

- 10 to 16.5 V DC.

Supply current

- 120 mA min - no backlighting.
- 180 mA max - full backlighting.

Operating temperature

- 0 to 50°C (32 to 122°F).

Transom transducer cable length

- FISH 4100 - 10 m (33 ft).
- FISH 4150 - 8 m (26 ft).

Typical depth acquisition time from startup

- 2 seconds at 100 feet (30.5 m).

Transducer frequency

- 200 kHz

Transducer power

- 150 Watts RMS @ 13.8 V DC (during burst).

Receiver sensitivity

- Better than 10 micro volts RMS.
- Dynamic range 4.0 million to 1 (120 dB).

Standards Compliance

- EMC: USA FCC Part 15 Class B.
Europe (CE) EN50081-1 and EN50082-1
New Zealand and Australia (C Tick)
AS-NZS 3548

- Environment: IP67

The following specifications relate to the FISH 4150 only:

Temperature measurement range

- 0 to 37.7°C (32 to 99.9°F) Resolution 0.1 units.

Speed range

- 1 to 50 kn (57.5 mph, 96.6 kph).

Speed resolution

- 0.0 to 9.9, 10 to 50.

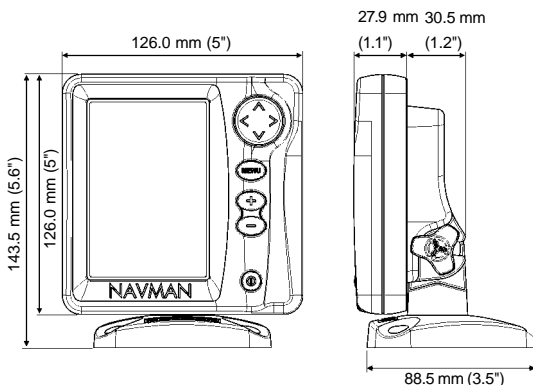
Communications

- NMEA 0183 (Ver 2.0) 4800 Baud.

NMEA output

NMEA (0183 format) is a standard for interfacing marine electronic devices. The NAVMAN fishfinder can output the following data:

- DBT (Depth Below Transducer).
- DPT (Depth and Keel offset).
- TDK (Depth NAVMAN NZ - proprietary).
- TKV (Speed NAVMAN NZ - proprietary).
- VHW (Speed).
- MTW (Water temperature).
- XDR (Battery voltage).



Appendix B - Troubleshooting

This troubleshooting guide is written with the assumption that the user has read and understood the relevant sections in this manual.

It is possible in many cases to solve difficulties without having to send the display unit back to the manufacturer for repair. Please follow this troubleshooting section before contacting the nearest NAVMAN dealer.

There are no user serviceable parts. Specialized methods and testing equipment are required to ensure that the display unit is reassembled correctly and is waterproof. Users who service a NAVMAN fishfinder themselves will void the warranty.

Repairs to the NAVMAN fishfinder may only be carried out by a service centre approved by NAVMAN NZ. If the display unit must be sent into a service centre for repair, it is essential to send in the transducer(s) at the same time.

More information can be found on our Website: www.navman.com.

1. The fishfinder won't turn on:

- a) NAVMAN fishfinders are designed to operate on 12 volt battery systems, where the voltage may vary from 10 to 16.5 volts. If an excessive voltage is supplied to the unit, a resettable fuse will be tripped, turning the display unit off.
- b) Check that the power cable LT connector at the back of the display unit is securely plugged in and the collar is locked in place. The collar must be secure for watertight connection.
- c) Measure the battery voltage while the battery is under load - turn on some lights, radio, or other electrical equipment connected to the battery. If the voltage is less than 10 volts:
 - the battery terminals or wiring on the terminals may be corroded.
 - the battery may not be charging correctly or may need replacing.
- d) Inspect the power cable from end to end for damage such as cuts, breaks, or squashed sections.
- e) Ensure that the red wire is connected to the positive battery terminal and the black wire to the negative battery terminal. If wired for the engine hour option, ensure the yellow wires are connected to the ignition circuit. Also check the boat's main switch circuit. See section 5-4.
- f) Check for corrosion on the power cable LT connector and clean or replace if required.
- g) Check fuses that are placed in line with the power cable. A fuse can be blown despite appearing to be good, or the fuse may be

corroded. Test the fuse or replace it with a fuse known to be good.

2. The fishfinder won't turn off:

The fishfinder may have been wired with the Engine Hours feature enabled. In this case, the fishfinder cannot be turned off while the ignition power is on. See Auto Power Wiring in section 5-4.

3. The fishfinder operates erratically:

- a) Check that the transducer does not have debris (e.g. weed, plastic bag) caught around it.
- b) The transducer may have been damaged during launching, running aground, or running underway with debris etc. If the transducer has been impacted, it may have been kicked up on the bracket. If it is not physically damaged, push it back down so it 'clicks' into place.
- c) When in water less than 2 feet (0.6m) the bottom and depth readings may become inconsistent and erratic. This depth is measured from the transducer and does not allow for any keel offset setting.
- d) Manual Gain may be set too low, which may cause weak bottom echo, or no fish signals. If Auto Gain is disabled try increasing the gain.
- e) Ensure the back of the bottom surface of the transducer is slightly lower than the front and the front is as deep in the water as possible in order to minimize the generation of bubbles through cavitation. See the Transducer Installation Guide for more information.
- f) Check the transducer and power cable LT connectors at the back of the display unit are securely plugged in and the collar is locked in place. The collar must be secure for watertight connection.
- g) Inspect the transducer and power cables from end to end for damage such as cuts, breaks or squashed sections.
- h) Ensure there is not another fishfinder or depth sounder turned on, which may interfere with the NAVMAN fishfinder.
- i) Electrical noise from the boat's engine or an accessory may be interfering with the transducer(s) and/or the NAVMAN fishfinder. This may cause the fishfinder to automatically decrease the gain unless using Manual Gain. The fishfinder thus eliminates weaker signals such as fish or even the bottom from the display. This may be checked by switching off other instruments, accessories (e.g. bilge pump) and the motor until the offending device is located.

To stop problems from electrical noise, try:

- rerouting the power and transducer cable(s) away from the boat's other electrical wiring.
- routing the unit's power cable directly to the battery instead of through a fuse block or ignition switch.

4. Bottom is not displayed:

- a) The fishfinder may have Manual Range selected and the depth may be outside the range value selected. Either change the fishfinder to Auto Range or select another depth range - see section 3.8.
- b) The depth may be outside the fishfinder's range. While in Auto Range, the display unit will flash the last depth displayed, then display "--." to indicate that there is no bottom detected. A display of the bottom should reappear when it is shallower than 180m (600ft).

5. The bottom is displayed too far up the screen:

The fishfinder may have Manual Range selected and the selected Range value is too high for the depth. Either change the fishfinder to Auto Range or select another depth range - see section 3-8.

6. Bottom echo disappears or erratic digital reading while the boat is moving:

- a) Ensure the back of the bottom surface of the transducer is slightly lower than the front and the front is as deep in the water as possible in order to minimize the generation of bubbles through cavitation. See the Transducer Installation Guide for more information.
- b) The transducer may be in turbulent water. Air bubbles in the water disrupt the echoes returned, interfering with the fishfinder's ability to find the bottom or other targets. This often happens when the boat is reversed. The transducer must be mounted in a smooth flow of water in order for the fishfinder to work at all boat speeds.
- c) Electrical noise from the boat's motor can interfere with the fishfinder. Try some suppression spark plugs.

7. If the fishfinder beeps when turned on but nothing is displayed:

The fishfinder may be operating, but the contrast settings may have been set too high or low. Power off the fishfinder. Then hold > and press **O** to reset the fishfinder to the default contrast setting.

8. The wrong language is displayed:

See section 2.

9. The message "NO TRANSDUCER DETECTED. ENTER SIMULATION MODE?" appears when you turn the unit on:

- a) Check to see that the blue transducer connector is plugged into the top connector (with the blue nut) on the rear of the display unit.
- b) Check the cable connectors are securely plugged in and the blue collars are locked in place. The collars must be secure for water tight connection.
- c) Check that the plugs are clean and free of water or anything that may short deteriorate the quality of the connection. Inspect the transducer cable from end to end for damage such as cuts, breaks, stretched or squashed sections.

NORTH AMERICA
NAVMAN USA INC.

18 Pine St. Ext.
Nashua, NH 03060.
Ph: +1 603 577 9600
Fax: +1 603 577 4577
e-mail: sales@navmanusa.com

OCEANIA

New Zealand
Absolute Marine Ltd.
Unit B, 138 Harris Road,
East Tamaki, Auckland.
Ph: +64 9 273 9273
Fax: +64 9 273 9099
e-mail:
navman@absolutemarine.co.nz

Australia
NAVMAN AUSTRALIA PTY.
Limited.
Unit 6 / 5-13 Parsons St,
Rozelle, NSW 2039, Australia.
Ph: +61 2 9818 8382
Fax: +61 2 9818 8386
e-mail: sales@navman.com.au

SOUTH AMERICA

Argentina
HERBY Marina S.A.
Costanera UNO,
Av Pte Castillo Calle 13
1425 Buenos Aires, Argentina.
Ph: +54 11 4312 4545
Fax: +54 11 4312 5258
e-mail:
herbymarina@ciudad.com.ar

Brazil
REALMARINE.
Estrada do Joa 3862,
CEP2611-020,
Barra da Tijuca, Rio de Janeiro,
Brasil.
Ph: +55 21 2483 9700
Fax: +55 21 2495 6823
e-mail:
vendas@marinedepot.com.br

Equinatic Com Imp Exp de
Equip Nauticos Ltda.
Av. Diario de Noticias 1997 CEP
90810-080, Bairro Cristal, Porto
Alegre - RS, Brasil.
Ph: +51 241 02 14
Fax: +51 249 66 75
e-mail:
equinatic@equinatic.com.br

ASIA

China
Peaceful Marine Electronics Co. Ltd.
Hong Kong, Guangzhou,
Shanghai, Qindao, Dalian.
E210, Huang Hua Gang Ke Mao
Street, 81 Xian Lie Zhong Road,
510070 Guangzhou, China.
Ph: +86 20 3869 8784
Fax: +86 20 3869 8780
e-mail:
sales@peaceful-marine.com
Website:
www.peaceful-marine.com

Malaysia
Advanced Equipment Co.
43A, Jalan Jejaka 2, Taman
Maluri, Cheras 55100,
Kuala Lumpur.
Ph: +60 3 9285 8062
Fax: +60 3 9285 0162
e-mail: ocs@pc.jaring.my

Singapore
RIQ PTE Ltd.
81, Defu Lane 10, HAH Building,
#02-00 Singapore 539217.
Ph: +65 6 2835336
Fax: +65 6 2833076
HP: +65 96795903
e-mail: riq@postone.com

Thailand
Thong Electronics (Thailand)
Company Ltd.
923/588 Sethakit 1 Road,
Mahachai,
Muang, Samutsakhon 74000,
Thailand.
Ph: +66 34 411 919
Fax: +66 34 422 919
e-mail: thonge@cscscom.com

Vietnam
Haidang Co. Ltd.
16A/A1E, Ba thung hai St.
District 10, Hochiminh City.
Ph: +84 8 86321 59
Fax: +84 8 86321 59
e-mail:
sales@haidangvn.com
Website: www.haidangvn.com

MIDDLE EAST

Lebanon and Syria
Letro, Balco Stores,
Moutran Street, Tripoli
VIA Beirut.
Ph: +961 6 624512
Fax: +961 6 628211
e-mail: balco@cyberia.net.lb

United Arab Emirates
Kuwait, Oman & Saudi Arabia
AMIT, opp Creak Rd.
Baniyas Road, Dubai.
Ph: +971 4 229 1195
Fax: +971 4 229 1198
e-mail: mksq99@email.com

AFRICA

South Africa
Pertec (Pty) Ltd Coastal,
Division No.16 Paarden Eiland Rd.
Paarden Eiland, 7405
Postal Address: PO Box 527,
Paarden Eiland 7420
Cape Town, South Africa.
Ph: +27 21 511 5055
Fax: +27 21 511 5022
e-mail: info@kfa.co.za

EUROPE

France, Belgium and
Switzerland
PLASTIMO INTERNATIONAL
15, rue Ingénieur Verrière,
BP435,
56325 Lorient Cedex.
Ph: +33 2 97 87 36 36
Fax: +33 2 97 87 36 49
e-mail: plastimo@plastimo.fr
Website: www.plastimo.fr

Germany
PLASTIMO DEUTSCHLAND
15, rue Ingénieur Verrière
BP435
56325 Lorient Cedex.
Ph: +49 6105 92 10 09
+49 6105 92 10 10
+49 6105 92 10 12
+49 6105 92 10 11
Fax: +49 6105 92 10 11
e-mail:
plastimo.international@plastimo.fr
Website: www.plastimo.de

Italy
PLASTIMO ITALIA
Nuova Rade spa, Via del Portosao 5
I-16015 CASELLA SCRIVIA (GE).
Ph: +39 1096 8011
Fax: +39 1096 8015
e-mail: info@nuovarade.com
Website: www.plastimo.it

Holland
PLASTIMO HOLLAND BV.
Industrieweg 4,
2871 JE SCHOONHOVEN.
Ph: +31 182 320 522
Fax: +31 182 320 519
e-mail: info@plastimo.nl
Website: www.plastimo.nl

United Kingdom
PLASTIMO Mfg. UK Ltd.
School Lane - Chandlers Ford
Industrial Estate,
EASTLEIGH - HANTS S053 ADG.
Ph: +44 23 8026 3311
Fax: +44 23 8026 6328
e-mail: sales@plastimo.co.uk
Website: www.plastimo.co.uk

Sweden, Denmark or Finland
PLASTIMO NORDIC AB.
Box 28 - Lundenvägen 2,
47321 HENAN.
Ph: +46 304 360 60
Fax: +46 304 307 43
e-mail: info@plastimo.se
Website: www.plastimo.se

Spain
PLASTIMO ESPAÑA, S.A.
Avenida Narcís Monturiol, 17
08339 VILASSAR DE DALT,
(Barcelona).
Ph: +34 93 750 75 04
Fax: +34 93 750 75 34
e-mail: plastimo@plastimo.es
Website: www.plastimo.es

Other countries in Europe
PLASTIMO INTERNATIONAL
15, rue Ingénieur Verrière
BP435
56325 Lorient Cedex, France.
Ph: +33 2 97 87 36 59
Fax: +33 2 97 87 36 29
e-mail:
plastimo.international@plastimo.fr
Website: www.plastimo.com

REST OF WORLD /
MANUFACTURERS
NAVMAN NZ Limited.
13-17 Kawana St. Northcote.
P.O. Box 68 155 Newton,
Auckland, New Zealand.
Ph: +64 9 481 0500
Fax: +64 9 480 3176
e-mail:
marine.sales@navman.com
Website:
www.navman.com

Made in New Zealand
MN000141 1951332B

FISHFINDER 4100 / 4150

Lon 174° 44.535'E

NAVMAN

Lat 36° 48.404'S

FC  CE